



## 120 St. Albans Road

, Dartford, DA1 1TZ

**Guide Price £325,000**



GUIDE PRICE £325,000 - £350,000. OPEN DAY 16TH APRIL IS NOW FULLY BOOKED, PLEASE CALL TO BE ADDED TO THE RESERVE LIST. MMS are offering to the market this well maintained and must see 2 bedroom terrace house in Dartford. This is ready to move straight into and would be a perfect first home. You enter via the handy porch where you can remove shoes and coats before going through to the light and airy lounge/diner with a feature display fire surround. The white kitchen is fitted and gives access to the convenient downstairs WC and utility room and there is also a lean to the side providing access to the garden. Upstairs there are 2 neutrally decorated double bedrooms and a good size bathroom offering a bath plus a cubicle shower. The pretty garden is easy to maintain with a patio and artificial lawn area. To the front there is a small courtyard front garden. This is a must see property and we recommend an internal viewing. Located close to most amenities and schools and offers great transport links via the A2/M25/Ebbsfleet station.

Council Tax Band D



Porch

Lounge/diner

Kitchen

WC/Utility room

Lean-to

Stairs/Landing

Bedroom 1

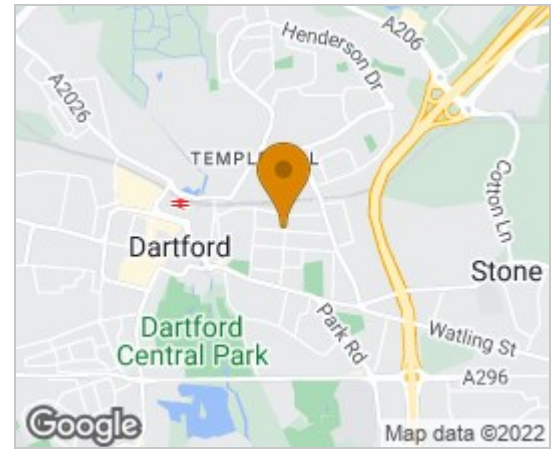
Bedroom 2

Bathroom

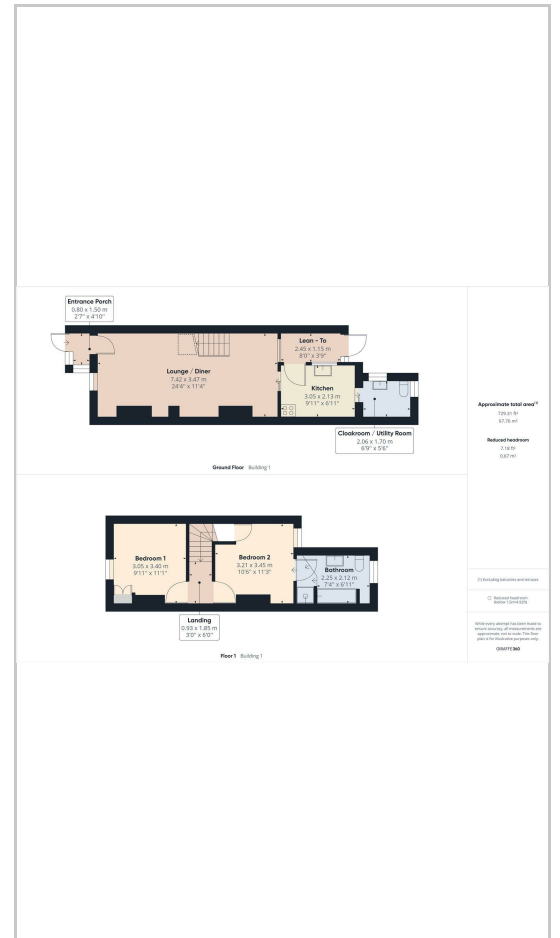
Rear garden

Front

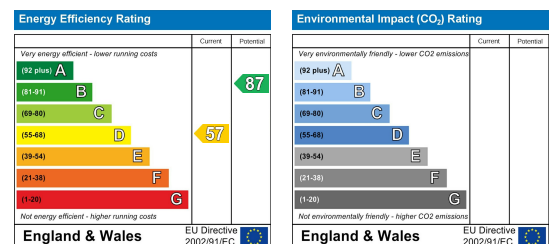
## Area Map



## Floor Plans



## Energy Efficiency Graph



These particulars, whilst believed to be accurate are set out as a general outline only for guidance and do not constitute any part of an offer or contract. Intending purchasers should not rely on them as statements of representation of fact, but must satisfy themselves by inspection or otherwise as to their accuracy. No person in this firm's employment has the authority to make or give any representation or warranty in respect of the property.

159 High Street, Strood, Rochester, Kent, ME2 4TH

Tel: 01634 735335 Email: justine@medwaymortgageshop.co.uk www.medwaymortgageshop.co.uk